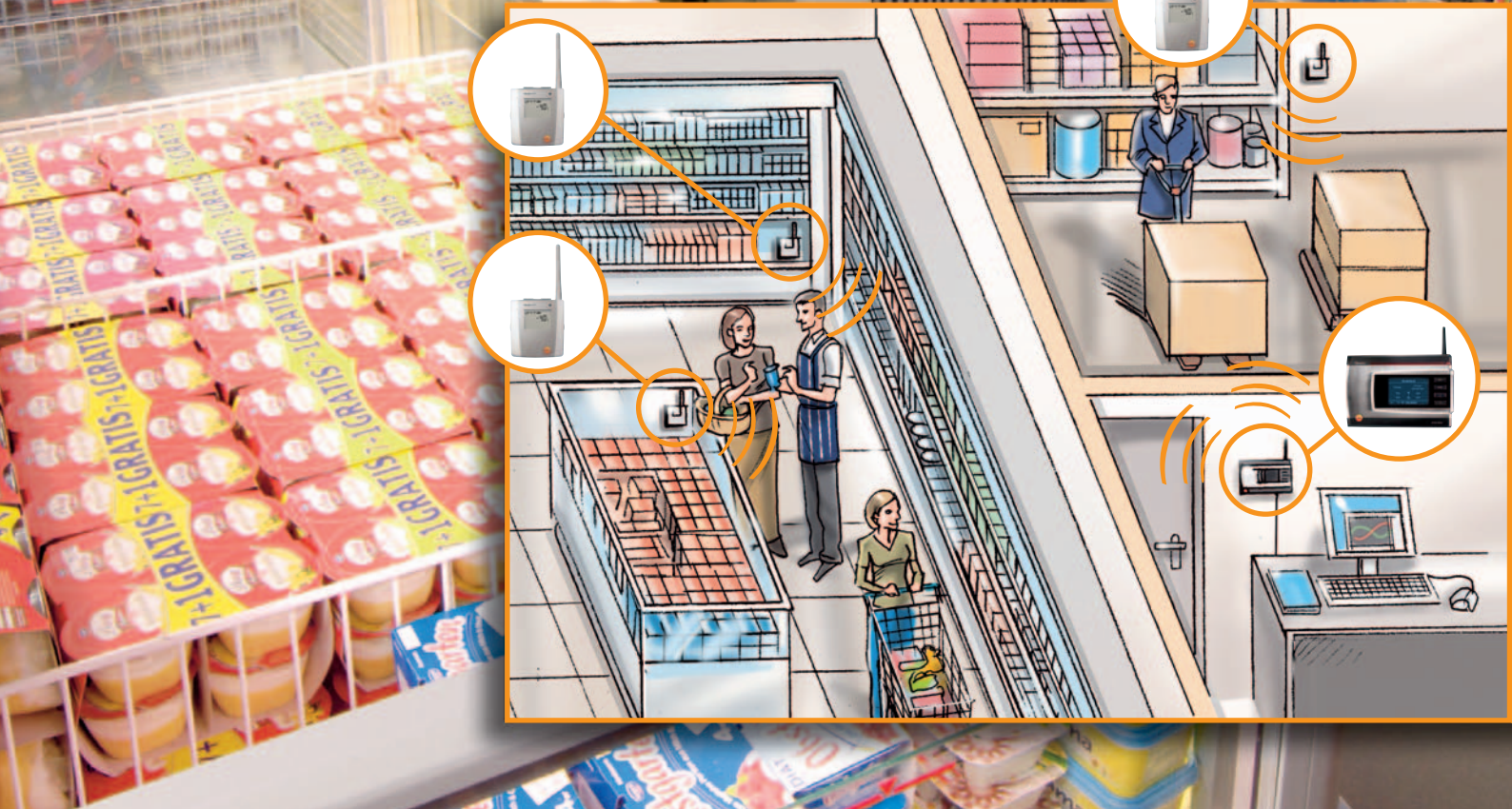




Committing to the future

HACCP bureaucracy made easy.

Measurement data monitoring automated with **testo Saveris™**.



testo Saveris™ System overview

testo Saveris radio probe

Probe versions with internal and external temperature and humidity sensors allow the adaptation to every application. The radio probes are available with or without a display as an option. The memory in the probe ensures that the measurement data is not lost in the event of an interference in the radio link. Current measurement data, the battery status and the quality of the radio link are shown in the display.



testo Saveris radio probe



testo Saveris radio probe

testo Saveris radio probe

testo Saveris base

The base is the heart of testo Saveris and can save 40,000 readings per measurement channel independent of the PC. This corresponds to around one year of memory capacity at a measuring rate of 15 minutes. The system data and alarms are visible via the display of the Saveris base.



testo Saveris base

USB or Ethernet

Expansion via Ethernet probe possible

testo Saveris software

The testo Saveris software offers simple operation and an intuitive user interface. The Saveris software is available in two different versions: as the basic version SBE (Small Business Edition) or the PROF (Professional) software version with diverse additional options. If external access to the measurement data from outside the location is required, Internet access for the display of all measurement data can be set up.



testo Saveris software



testo Saveris router

Further system possibilities

In addition to the radio probes, probes can be used that are directly connected to the Ethernet. The existing LAN infrastructure can be used through this.

A network-compatible version of the Saveris software is also available. Further information on this is available from testo or from selected specialist retailers.

Please contact us for more information.