



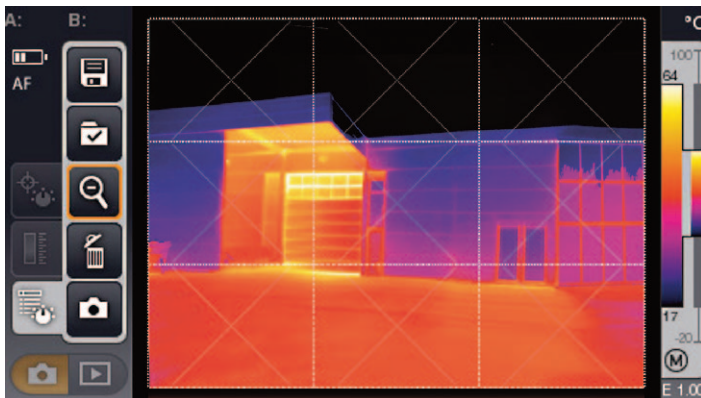
## The application



### When “just going further away” simply doesn’t work.

Not only the size of a measurement object can become a challenge in thermography. Spatial limitations such as walls, neighbouring buildings and streets or the security zones of adjacent objects, can result in it not being possible to record the measurement object with a single image. Even at sufficient range, users often reach the limits of the imager resolution: if the measurement object is to be presented in total, the thermal image may no longer be sufficiently detailed. The way out of the dilemma: Record several images separately. However, viewing and analyzing several images increases the time and effort required. A total analysis of the measurement object at a glance is often more useful. Thermal irregularities can be better illustrated than in a separate analysis in several image sections.

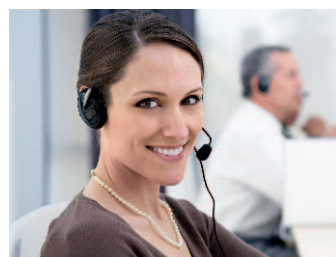
## The solution



### Overview and attention to detail in one image.

Testo thermal imagers already have light wide-angle lenses as standard – so they can take thermal images of larger image section than with normal lenses anyway. If this is not sufficient, the panorama assistant in the testo 885 and the testo 890 can help: You just take thermal images of the object in several partial sections, and the panorama image assistant makes a total image out of them for you. For example,

this allows you to present an area of 176 m<sup>2</sup> in one image at a distance of 10 m. With the panorama assistant, you can not only inspect large objects while retaining full detail: it is also a very efficient instrument for your daily work, as long searches and the separate viewing of different object views is no longer necessary.



### More information:

For more information and answers to all your questions concerning the topics of thermography and the panorama image assistant, contact our experts at +49 7653 681 700 or [thermografie@testo.de](mailto:thermografie@testo.de).