

We measure it.



TESTO solutions

# Thermography with SiteRecognition technology for efficient maintenance



## Allocate your images yourself, or have the imager do it for you – you have the choice.

Many similar measurement objects mean many similar thermal images. Previously, in order to be able to allocate the measurements clearly to the different measurement sites, users needed to keep complex lists, or add a voice comment to each individual thermal image. A patent-pending Testo innovation now solves these problems: with Testo SiteRecognition technology, measurement sites are automatically recognized and the resulting thermal images correctly archived. This allows periodical inspection tours to be conducted efficiently.



## The application

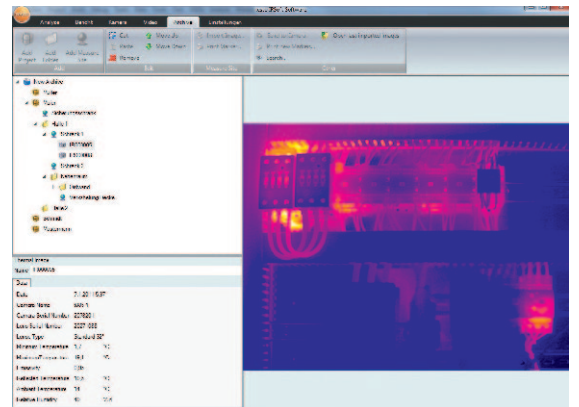
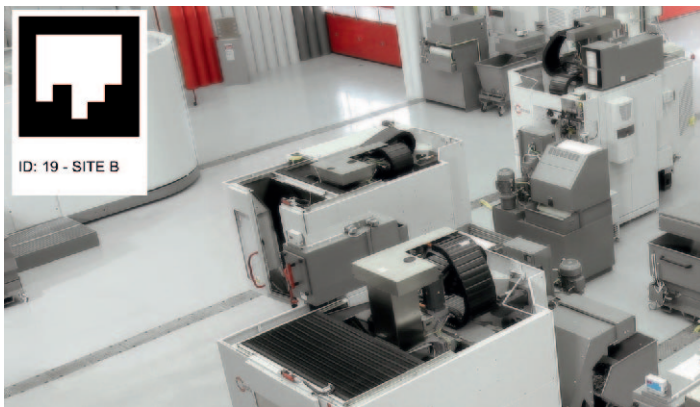


### Can't see the woods for the trees?

The thermography of many similar measurement objects, and in particular the correct archiving of the recorded thermal images is a significant challenge in industrial maintenance. The direct allocation of the images on site is important. Because if the images are not allocated until after the completed inspection tour, it can easily happen that an image is allocated to the wrong measurement object. In such circumstances, machines can be diagnosed with thermal irregularities which in fact belong to other objects.

The problem becomes even more complex when temperature developments need to be traced over several periods: If the images are incorrectly allocated, error diagnoses are made more difficult, or even impossible.

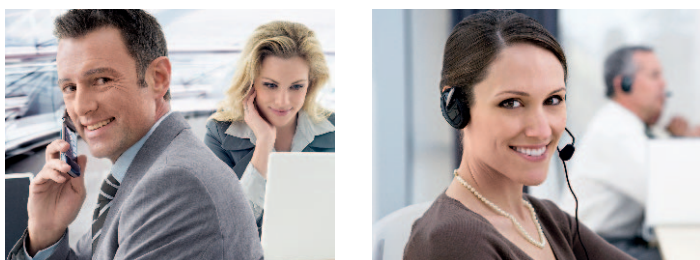
## The solution



### More efficiency and security in allocation.

The SiteRecognition technology of testo 885 and testo 890 saves time and nerves. The measurement site recognition with measurement site management carries out the recognition, storage and management work for the thermal images after a measurement series. Periodical inspection tours can be conducted efficiently and all thermal images then precisely analyzed on a PC. Simply identify the measurement sites with markers on the measurement object, and the imager does the rest.

Incorrectly allocated images become a thing of the past. Valuable work time can be used for other tasks in maintenance instead of for sorting thermal imagers. The additional benefit: Convenient search functions find images quickly and easily, for example based on the name of a measurement object, a date or a certain temperature. This allows uncomplicated direct call-up of comparative images from past periods.



### More information:

For more information and answers to all your questions concerning thermography with SiteRecognition technology, contact our thermography experts at +49 7653 681 700 or [thermografie@testo.de](mailto:thermografie@testo.de).